

MHP 80

FIELD SERVICE & MOBILE WORKSHOP
HAND PUMP, PORTABLE



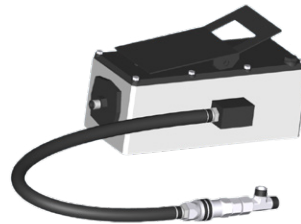
KEY FEATURES

- Compact
- Lightweight
- Easy to use
- Balanced design
- Dual stage pump
- 1" Die Set included

OPTIONAL



Maintenance Kits



Hydro-pneumatic Pump

TECHNICAL SPECIFICATIONS

CRIMP RANGE 4 - 43 mm (0.157 - 1.693")	DIMENSIONS 330 x 250 x 400 mm (13 x 10 x 16")
CRIMP FORCE 80 t	PACKAGING 800 x 600 x 830 mm (31 x 24 x 33")
OPENING WITH DIES +20 mm (+0.787")	NET WEIGHT 28 kg (62 lb)
COMPLETE OPENING 59 mm (2.323")	GROSS WEIGHT 41 kg (90 lb)
MASTER DIE LENGTH 56 mm (2.205")	TECHNICAL FEATURES Hand pump: 5000 psi (double speed)
STANDARD DIES 15, 18, 21, 24, 27, 30, 39	

HOSE AND FITTINGS SELECTION		
HOSE TYPE	FITTING TYPE	MAX HOSE SIZE
2 WIRE BRAID & TEXTILE	MF2000 MULTIFIT; MF3000 OPK; MF3000 OPF	1"
3 WIRE (1 BRAID + 2 SPIRAL)	MF2000 MULTIFIT	1/2"
4 WIRE SPIRALS	MF2000 MULTIFIT; MF3000 OPK	1/2"